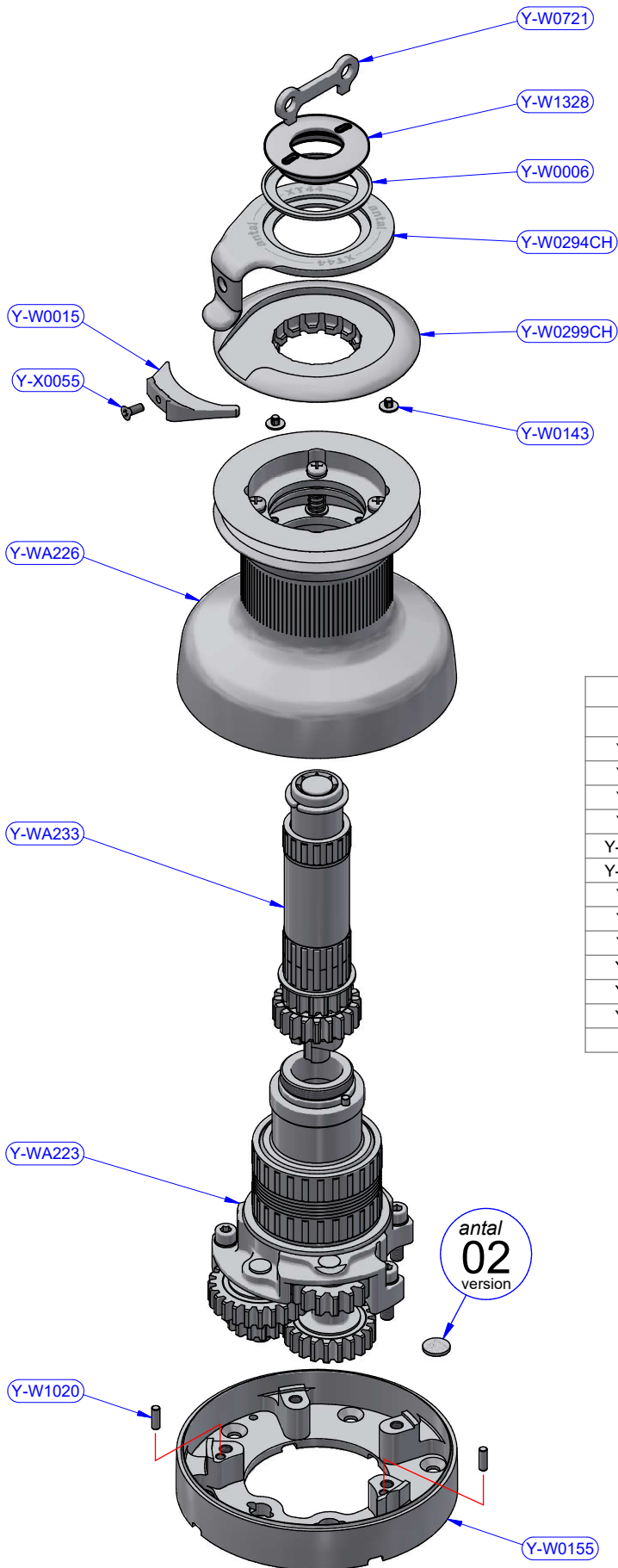


PART LIST

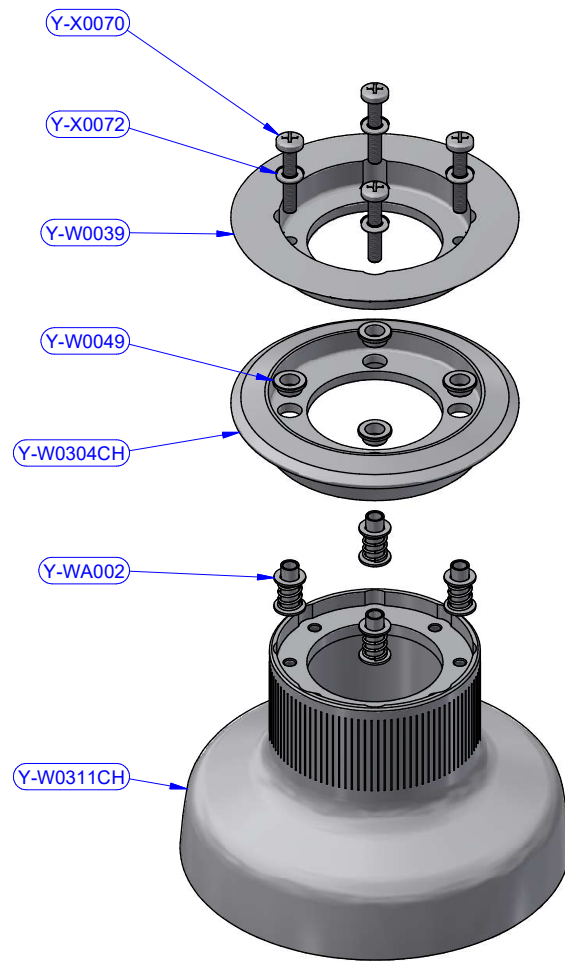
CODE	DESCRIPTION	MATERIAL	Q.TY
XT44CHX	Brass	Various	1
Y-WA235	Disengagement box + Horizontal drive assy	Various	1

MOTOR

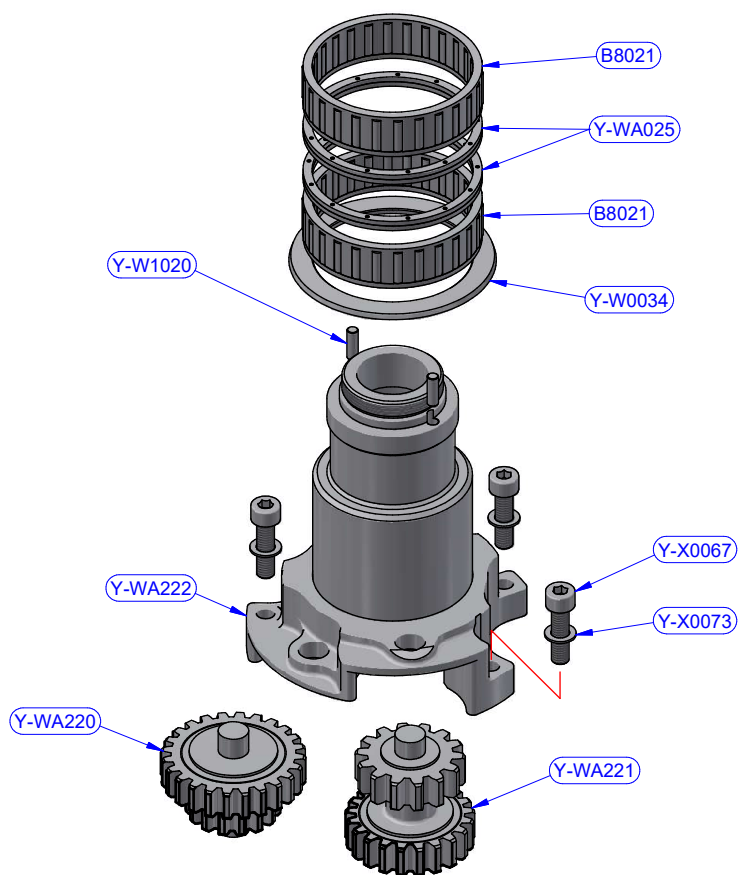
CODE	DESCRIPTION	Q.TY
Y-W0416	700W 12V	1
Y-W0417	700W 24V	1
Y-W1377	700W 48V	1



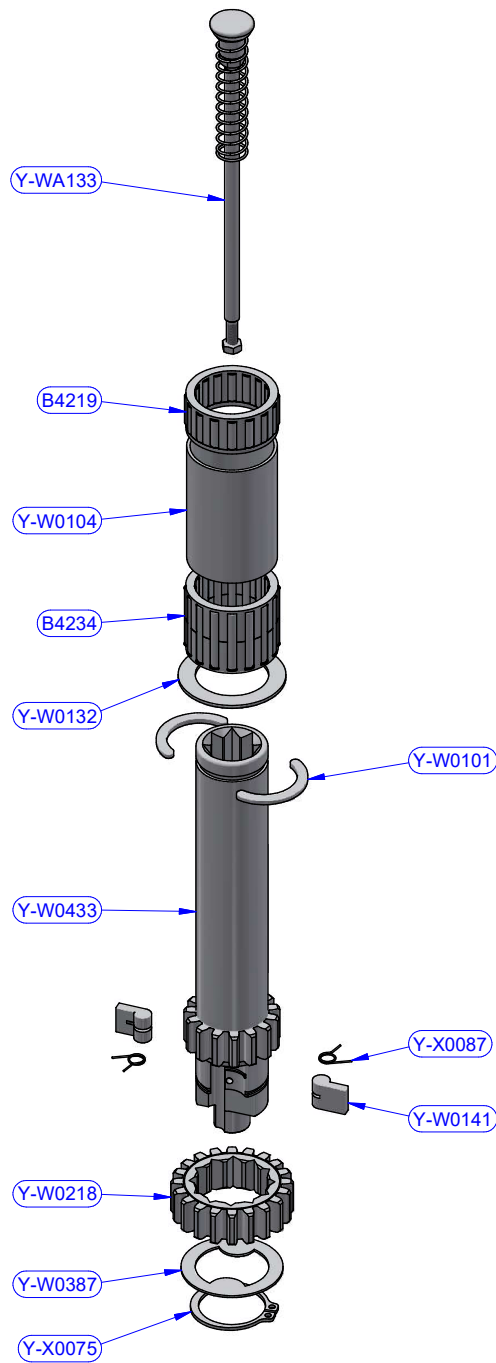
XT44CHX - PART LIST			
CODE	DESCRIPTION	MATERIAL	Q.TY
Y-W0006	Upper ring washer	Plastic	1
Y-W0015	Stripper	Plastic	1
Y-W0143	ST plug	Plastic	4
Y-W0155	Skirt	Aluminium	1
Y-W0294CH	Self-tailing arm	Chromed brass	1
Y-W0299CH	Upper disk	Chromed brass	1
Y-W0721	Opening Tool	S.Steel	1
Y-W1020	Cylinder pin	S.Steel	2
Y-W1328	Upper cap	S.Steel	1
Y-WA223	Base + Gears assy	Various	1
Y-WA226	Drum	Various	1
Y-WA233	Main shaft assy	Various	1
Y-X0055	Screw	S.Steel	1



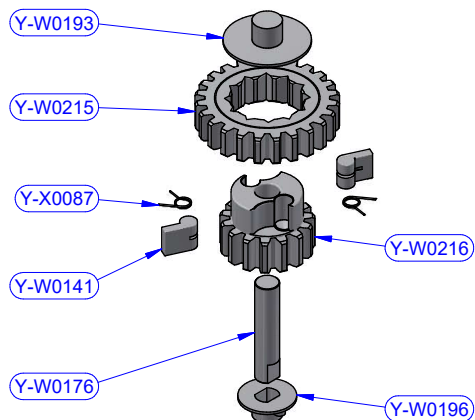
Y-WA226 - PART LIST			
CODE	DESCRIPTION	MATERIAL	Q.TY
Y-W0039	ST central disk	Aluminium	1
Y-W0049	ST disk bush	Plastic	4
Y-W0304CH	ST lower disk	Chromed brass	1
Y-W0311CH	Drum	Chromed brass	1
Y-WA002	ST-spring assy	S.Steel	4
Y-X0070	Screw	S.Steel	4
Y-X0072	S.Steel washer	S.Steel	4



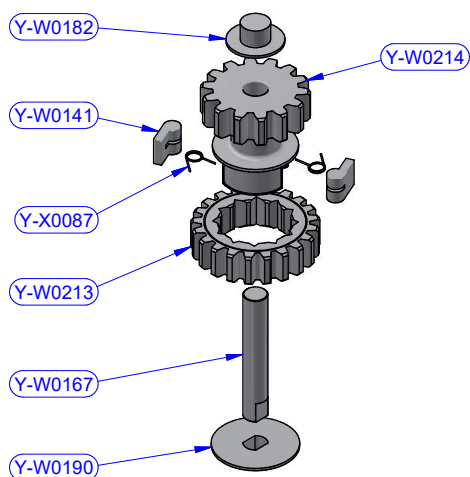
Y-WA223 - PART LIST			
CODE	DESCRIPTION	MATERIAL	Q.TY
B8021	Roller bearing	Plastic / S.Steel	2
Y-W0034	Drum washer	Plastic	1
Y-W1020	Cylinder pin	S.Steel	2
Y-WA025	Spacer	Plastic	2
Y-WA220	Gears kit	Various	1
Y-WA221	Gears kit	Various	1
Y-WA222	Base + Stem Assy	Various	1
Y-X0067	Screw	S.Steel	4
Y-X0073	S.Steel washer	S.Steel	4



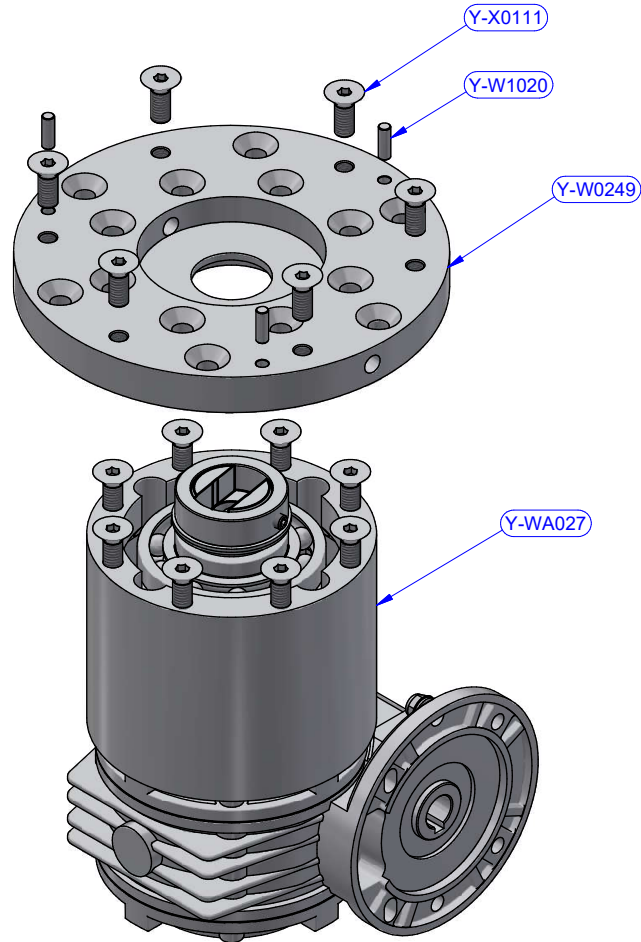
Y-WA233 - PART LIST			
CODE	DESCRIPTION	MATERIAL	Q.TY
B4219	Roller bearing	Plastic / S.Steel	1
B4234	Roller bearing	Plastic / S.Steel	1
Y-W0101	Half-ring	Brass	2
Y-W0104	Pipe spacer	Plastic	1
Y-W0132	S.Steel washer	S.Steel	1
Y-W0141	Pawl	S.Steel	2
Y-W0218	Gear "A2"	Bronze	1
Y-W0387	Special washer	S.Steel	1
Y-W0433	Main shaft	S.Steel	1
Y-WA133	Disengagement rod kit	S.Steel	1
Y-X0075	Seeger ring	S.Steel	1
Y-X0087	Torsion spring	S.Steel	2



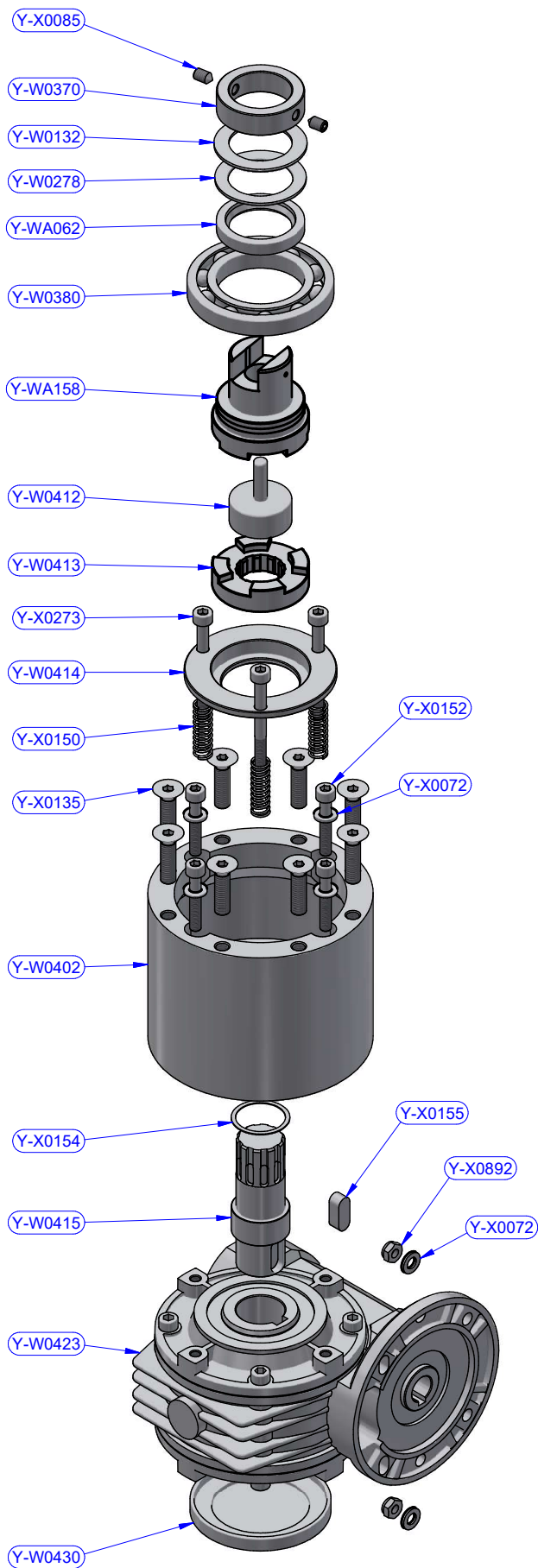
Y-WA220 - PART LIST			
CODE	DESCRIPTION	MATERIAL	Q.TY
Y-W0141	Pawl	S.Steel	2
Y-W0176	Gear axis	S.Steel	1
Y-W0193	Gear upper washer	Plastic	1
Y-W0196	Gear lower washer	Plastic	1
Y-W0215	Gear "D1"	Bronze	1
Y-W0216	Gear "D2"	Bronze	1
Y-X0087	Torsion spring	S.Steel	2



Y-WA221 - PART LIST			
CODE	DESCRIPTION	MATERIAL	Q.TY
Y-W0141	Pawl	S.Steel	2
Y-W0167	Gear axis	S.Steel	1
Y-W0182	Gear upper washer	Plastic	1
Y-W0190	Gear lower washer	Plastic	1
Y-W0213	Gear "B1"	Bronze	1
Y-W0214	Gear "B2"	Bronze	1
Y-X0087	Torsion spring	S.Steel	2



Y-WA235 - PART LIST			
CODE	DESCRIPTION	MATERIAL	Q.TY
Y-W0249	Skirt flange	Aluminium	1
Y-W1020	Cylinder pin	S.Steel	3
Y-WA027	Disengagement box + Horizontal drive assy	Various	1
Y-X0111	Screw	S.Steel	6



Y-WA027 - PART LIST

CODE	DESCRIPTION	MATERIAL	Q.TY
Y-W0132	S.Steel washer	S.Steel	1
Y-W0278	Resin washer	Resin	1
Y-W0370	Shaft connection	S.Steel	1
Y-W0380	Ball bearing	S.Steel	1
Y-W0402	Disengagement box	Aluminium	1
Y-W0412	Disengagement	Bronze	1
Y-W0413	Lower coupling	S.Steel	1
Y-W0414	Thrust ring	Bronze	1
Y-W0415	Gearbox shaft	Bronze	1
Y-W0423	Horizontal gearbox	Alu + S.Steel	1
Y-W0430	Gearbox cap	Aluminium	1
Y-WA062	Packing ring	Rubber	1
Y-WA158	Upper coupling	Various	1
Y-X0072	S.Steel washer	S.Steel	6
Y-X0085	Cone point set screw	S.Steel	2
Y-X0135	Screw	S.Steel	8
Y-X0150	Compression spring	S.Steel	3
Y-X0152	Screw	S.Steel	4
Y-X0154	C.F. washer	Tufnol	1
Y-X0155	Parallel key	S.Steel	1
Y-X0273	Screw	S.Steel	3
Y-X0892	Self-Locking nut	S.Steel	2